

HEAVY DUTY HYUNDAI



Mono Crystalline Module
330W - 360W 72 CELLS

Hyundai is one of the biggest brand names in the world. As a Heavy Industries manufacturer, Hyundai uses processes superior to standard PV manufacturing techniques. That is why we call our solar panel range “Heavy Duty”.



SCAN TO
WATCH VIDEO

Download QR Reader on
your mobile device



PERL TECHNOLOGY

PERL technology provides ultra-high efficiency with better performance in low irradiation. Maximises installation capacity in limited space.



ANTI-LID / PID

Both LID (Light Induced Degradation) and PID (Potential Induced Degradation) are strictly eliminated to ensure higher actual yield during lifetime.



MECHANICAL STRENGTH

Tempered glass and reinforced frame design withstand rigorous weather conditions such as heavy snow and strong wind.



RELIABLE WARRANTY

Global brand with powerful financial strength provides a reliable 25-year warranty.



CORROSION RESISTANT

Various tests under harsh environmental conditions such as ammonia and salt-mist passed.



UL / VDE TEST LABS

Hyundai's R&D centre is an accredited test laboratory of both UL and VDE.

ELECTRICAL CHARACTERISTICS

*All data at STC (Standard Test Conditions). Above data may be changed without prior notice.

MODEL	HiS-S330RI	HiS-S335RI	HiS-S340RI	HiS-345RI	HiS-350RI	HiS-S355RI	HiS-S360RI
Nominal Output (Pmpp) W	330	335	340	345	350	355	360
Open Circuit Voltage (Voc) V	46.3	46.5	46.7	46.9	47.1	47.3	47.4
Short Circuit Current (Isc) A	9.3	9.4	9.5	9.6	9.6	9.8	9.8
Voltage at Pmax (Vmpp) V	38.0	38.2	38.4	38.6	38.7	38.9	39.1
Current at Pmax (Impp) A	8.7	8.8	8.9	9.0	9.0	9.1	9.2
Module Efficiency %	16.9	17.1	17.4	17.6	17.9	18.1	18.4
Cell Type	6", mono-crystalline silicon						
Maximum System Voltage V	1,000						
Temperature Coefficient of Pmax °C	-0.40						
Temperature Coefficient of Voc %/K	-0.29						
Temperature Coefficient of Isc %/K	0.039						

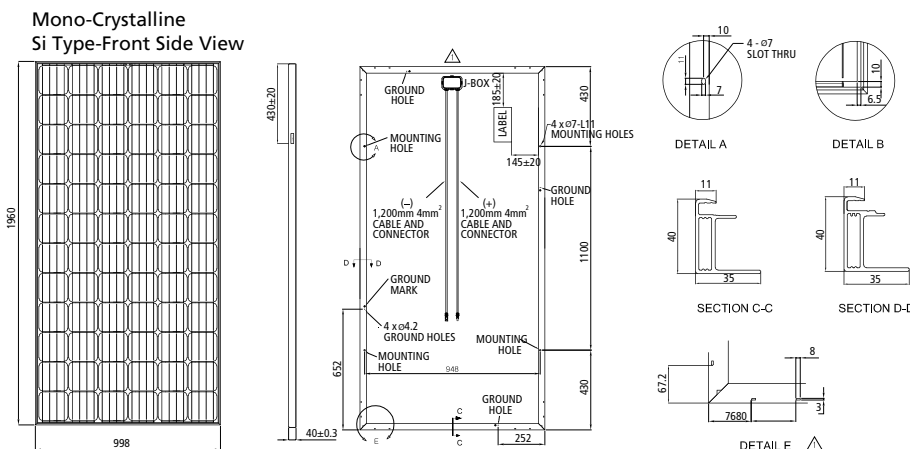
MECHANICAL CHARACTERISTICS

Dimensions	998mm (W) × 1,960mm (L) × 40mm (H)
Weight Approx.	22.9kg
Solar Cells	72 cells in series (6 × 12 matrix) (Hyundai cell, Made in Korea)
Output Cables	4 mm ² (12AWG) cables with polarised weatherproof connectors
IEC certified	(UL listed), Length 1.0m
Junction Box	IP67, weatherproof, IEC certified (UL listed)
Bypass Diodes	3 bypass diodes to prevent power decrease by partial shade
Construction Front	Anti-reflection coated glass, 3.2mm
Encapsulant	EVA Back Sheet: Weatherproof film
Frame	Clear anodized aluminum alloy type 6063

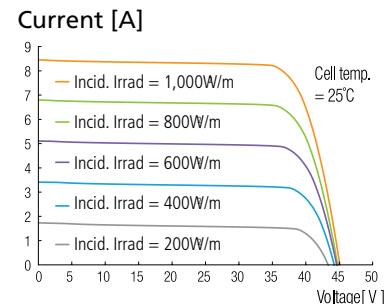
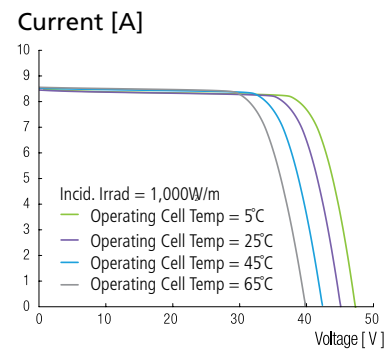
TEMPERATURE CHARACTERISTICS

Nominal Operating Cell Temperature	46°C ± 2
Operating Temperature	-40 - 85°C
Maximum System Voltage	DC 1,000 V (IEC) DC 1,000 V (UL)
Maximum Reverse Current	15A (Up to 350W) 20A (Above 355W)

MODULE DIAGRAM (unit:mm)



I-V CURVES



INSTALLATION SAFETY GUIDE

- Only qualified personnel should install or perform maintenance.
- Be aware of dangerous high DC voltage.
- Do not damage or scratch the rear surface of the module.
- Do not handle or install modules when they are wet.

CONTACT

Australian
Importer and Manufacturer
Hyundai Green Energy

Hyundai Sales and Warranty
Supply Partners Pty Ltd

☎ 07 3122 7584
 ✉ sales@supplypartners.com.au
 🌐 www.hhgreen.com