



SOLUNA™ | AU

POWER DESIGNED FOR NIGHT AND DAY





## ENVIRONMENT

An investment in clean, affordable energy – being eco-friendly begins at home.



## SECURITY

Blackout protection for energy security and peace of mind 24/7.



## INDEPENDENCE

Solar-energy storage for self-sufficiency and cheaper electricity.

## ABOUT US

Soluna Australia provides safe, premium-quality, battery-based solar-energy storage systems for residential, commercial, industrial and mining applications.

Formed via a collaboration between Lithium Australia<sup>NL</sup> and DLG Energy, we're part of a wider group focused on sustainability in lithium mining, processing and battery production, as well as the recycling of spent batteries, in order to create a circular battery economy.

SOLUNA™ | AU





# SOLUNA AUSTRALIA – committed to sustainability

## STEP 1

Lithium Australia, one of our parent companies, provides ethical and sustainable solutions for the battery industry with technologies designed to 'close the loop' on the energy-metal cycle, lowering costs and benefitting the environment in the process.

Lithium  
Australia<sup>NL</sup>

## STEP 2

Queensland-based VSPC, an R&D subsidiary of Lithium Australia, uses nanotechnology to create superior cathode materials for lithium-ion batteries.

VSPC

## STEP 3

DLG Energy, our other parent company and a leader in the field of battery manufacturing, produces Soluna Australia's entire range of energy-storage products.



DLG ENERGY

## STEP 4

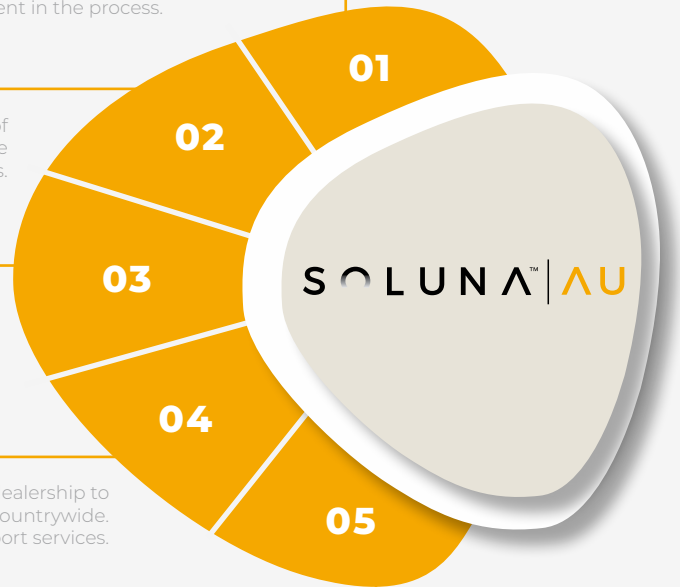
Soluna Australia works with a national dealership to provide our range of products and services countrywide. That includes sales, marketing and support services.

SOLUNA™ | AU

## STEP 5

At the end of their useful life, our products are recycled by Lithium Australia subsidiary Envirostream Australia, which recovers all the active components from the lithium-ion batteries. Then, as in Step 2, Lithium Australia subsidiary VSPC uses these to create materials for new lithium-ion batteries. The result is a circular, sustainable battery economy.

envirostream





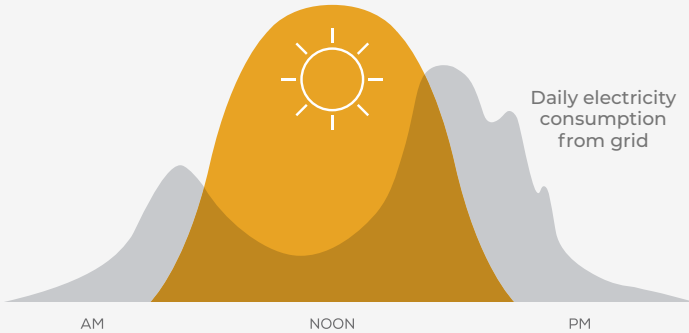
# ENVIRONMENT

POWER DESIGNED FOR CLEAN, AFFORDABLE ENERGY

## SYNCHRONISING WITH THE SUN

Soluna Power Banks store renewable solar energy and release it on demand. In so doing, they minimise pollution and maximise convenience by leveraging the power of the sun all day, every day.

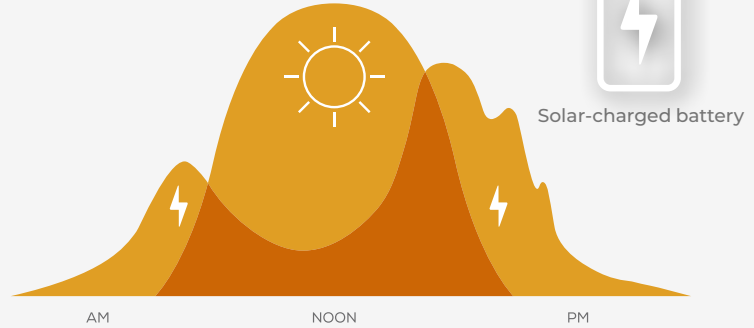
Solar production



SOLAR PRODUCTION SUPPLIES POWER DURING THE DAY, WITH ANY EXCESS FED BACK INTO THE ELECTRICITY GRID.

Solar only

Solar production



SOLAR PRODUCTION SUPPLIES POWER DURING THE DAY, WITH EXCESS STORED IN THE BATTERY FOR USE AT ANY TIME.

Solar + battery storage

## CLEAN, AFFORDABLE ENERGY

During the day, your solar array supplies your energy needs and charges your Soluna battery storage system. When the battery's full, any surplus power is returned to the local grid, saving you money and helping protect the environment.





INTRODUCING  
**SOLUNA™**  
SOLAR POWER BANKS



## POWER BANK FEATURES

- Intelligent power management.
- Simple programming, plus power history and data analysis.
- Touch-screen interface.
- Secure battery access door.
- Blackout protection.
- Generator input.
- Online monitoring.
- AC & DC coupling.
- Height-adjustable feet for level appearance and stability.



# BATTERY MODULE 4K PACK

## TECHNICAL SPECS



### POWER

Battery type	LFP
Capacity	3.84 kWh
Depth of discharge	90%
Voltage	51.2 VDC
Certification	Cell: UL1642 Pack: UN38.3, UL1973, & IEC62619
Max. charge/discharge	50 A
Operating temperature	-10° to 45° C
Storage temperature	-30° to 60° C
Humidity conditions	5% to 95%

---

### MISCELLANEOUS

Installation	Floor install indoors or under cover outdoors, or within a Power Bank casing
Weight	60 kg
Dimensions (H x W x D)	436 x 678 x 205 mm
Warranty	10-year standard warranty

# BATTERY MODULE 15K PACK HV

## TECHNICAL SPECS



### POWER

Battery type	NCM
Capacity	15 kWh
Depth of discharge	80%
Voltage	410 V
Certification	Cell: UL1642 Pack: UN38.3, UL1973, & IEC62619
Max. charge/discharge	30 A
Operating temperature	-10° to 45° C
Storage temperature	-20° to 60° C
Humidity conditions	5% to 95%

---

### MISCELLANEOUS

Installation	Floor install indoors
Weight	148 kg
Dimensions (H x W x D)	1205 (±3) x 654 (±2) x 227 (±2) mm
Warranty	10-year standard warranty

# POWER BANK S4

## TECHNICAL SPECS



### POWER

Inbuilt hybrid inverter

DC power	4.68 kW
AC power	3.6 kW
AC voltage	230 VAC 50 Hz
PV MPPT voltage	125-425 VDC
Battery type	LFP
Capacity	3.84 kWh
Battery voltage	51.2 VDC
Max. charge/discharge	50 A
Depth of discharge	90%
Battery modules	1
HDMI interface	7" LCD touch screen
Operating temperature	-10° to 40° C
Humidity conditions	5% to 95%
Certification	Cell: UL1642 Pack: UL1973 IEC62619:2017 System: IEC 62109-1 & IEC62109-2 AS/NZS 60950.a AS4777-2.2015

### MISCELLANEOUS

Installation	Floor install indoors
Weight	85 kg (not including battery)
Dimensions (H x W x D)	1230 x 700 x 340 mm
Warranty	10-year standard warranty*

\* NB: 2-year warranty for LCD touch screen,  
5-year warranty for circuit breakers.



# POWER BANK S8

## TECHNICAL SPECS



### POWER

Inbuilt hybrid inverter

DC power	6.5 kW
AC power	5.0 kW
AC voltage	230 VAC 50 Hz
PV MPPT voltage	125-425 VDC
Battery type	LFP
Capacity	7.68 kWh
Battery voltage	51.2 VDC
Max. charge/discharge	100 A
Depth of discharge	90%
Battery modules	1 or 2
HDMI interface	7" LCD touch screen
Operating temperature	-10° to 40° C
Humidity conditions	5% to 95%
Certification	Cell: UL1642 Pack: UL1973 IEC62619:2017 System: IEC 62109-1 & IEC62109-2 AS/NZS 60950.1 AS4777-2:2015

### MISCELLANEOUS

Installation	Floor install indoors
Weight	120 kg (not including battery/s)
Dimensions (H x W x D)	1335 x 750 x 565 mm
Warranty	10-year standard warranty*

\* NB: 2-year warranty for LCD touch screen,  
5-year warranty for circuit breakers.

# POWER BANK S12

## TECHNICAL SPECS



### POWER

Inbuilt hybrid inverter

DC power	6.5 kW
AC power	5.0 kW
AC voltage	230 VAC 50 Hz
PV MPPT voltage	125-425 VDC
Battery type	LFP
Capacity	11.5 kWh
Battery voltage	51.2 VDC
Max. charge/discharge	100 A
Depth of discharge	90%
Battery modules	1, 2 or 3
HDMI interface	7" LCD touch screen
Operating temperature	-10° to 40° C
Humidity conditions	5% to 95%
Certification	Cell: UL1642 Pack: UL1973 IEC62619:2017 System: IEC 62109-1 & IEC62109-2 AS/NZS 60950.1 AS4777-2:2015

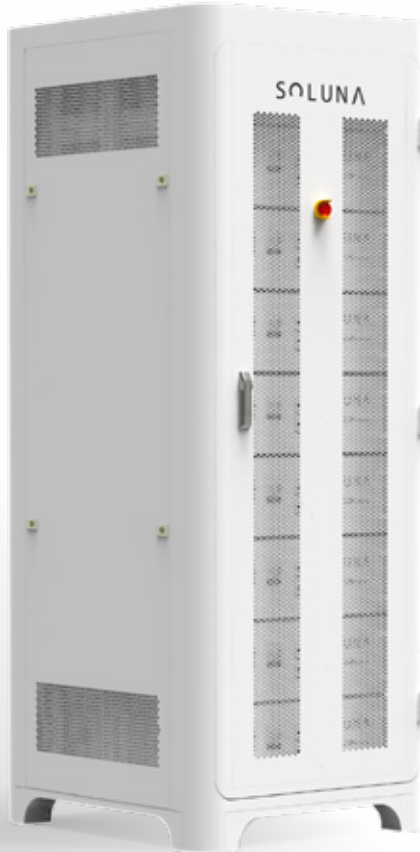
### MISCELLANEOUS

Installation	Floor install indoors
Weight	120 kg (not including battery/s)
Dimensions (H x W x D)	1335 x 750 x 565 mm
Warranty	10-year standard warranty*

\* NB: 2-year warranty for LCD touch screen,  
5-year warranty for circuit breakers.

# POWER CELL

## TECHNICAL SPECS



NB: Draft specifications only; formal specs to be revised on shipment to Australia.

### INVERTER

DC power	65 kW
AC power	50 kW
Grid type	3-phase + 4-wire
AC frequency	60 Hz
Battery charge/discharge voltage	200-750 V
Nominal AC output power	50 kVA (55 kVA max.)
AC output PF	Listed: 0.8-1 leading or lagging (load depend) Actual: 0.1-1 leading or lagging (load depend)
Overload capability	105% to 115% (10 minutes)
	115% to 125% (1 minute)
	125% to 150% (200 milliseconds)

### BATTERY

Battery type	LFP
Capacity	100 kWh
Depth of discharge	TBC
Nominal voltage	400
Max. charge/discharge current	150 A
Cycle life	6000

### REGULAR

Cooling	Forced air-cooling with replaceable fan module
Noise	<65 dB
Enclosure	IP20
Installation	Indoors
Operating temperature	-20° C to 60° C (derating over 45° C)
Humidity	5% to 95% (no condensing)
Max. elevation	3000 m (> 2000 m derating)
Dimensions (H x W x D)	1960 x 600 x 800 mm

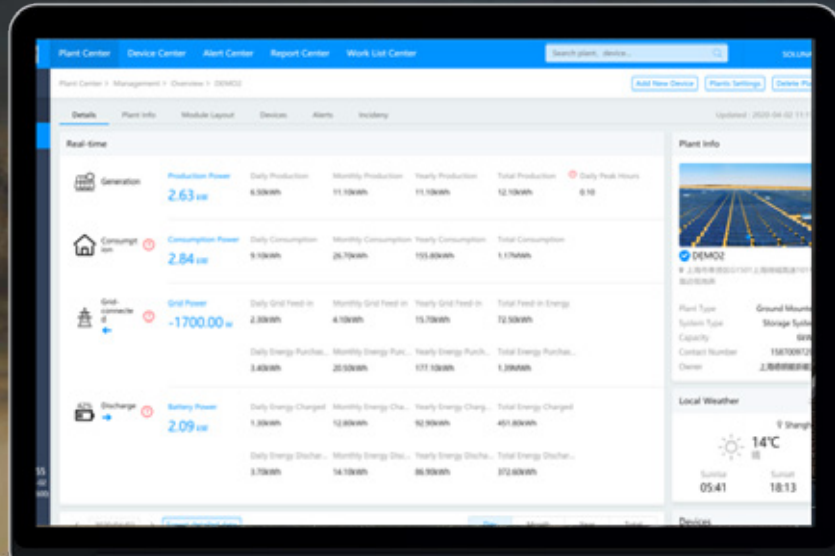
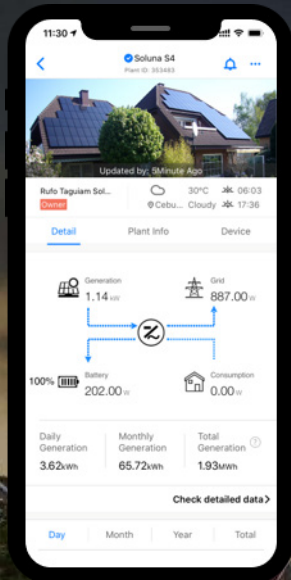
A white, cylindrical power station stands in a modern living room. To its left is a potted tree, and to its right is a grey sofa with a blue cushion. A large window in the background offers a view of the ocean. The text 'INDEPENDENCE' is overlaid in large white letters across the center of the image.

# INDEPENDENCE

POWER DESIGNED TO SET YOU FREE

# MONITORING

Soluna's online monitoring portal puts the power in your hands.  
View your energy consumption, generation and battery usage – all in one location.







## HOME STORAGE SYSTEM SPECIFICATIONS

Inverter-PV input	S4 EU-A36	S8 EU-A50	S12 EU-A50
Max. recommended DC power (kW)	4.68	6.5	6.5
Max. DC voltage (V)	500	500	500
Nominal DC operating voltage (V)	360	360	360
MPPT voltage range (V)	125-425	125-425	125-425
Max. input current MPPT (A)	11	11/11	11/11
Max. short current (A)	16	16	16
Number of MPPT trackers	1	2	2
Strings per MPPT tracker	1	1/1	1/1
Efficiency (%)	97	97	97
Inverter-AC input & output			
Max. continuous power (kW)	3.6	5.0	5.0
Max. AC output current (A)	18	25	25
Max. AC input current (A)	18	25	25
Max. AC protection current (A)	18	18	18
Nominal AC voltage (VAC)	230; single-phase (L/N/PE)	230; single-phase (L/N/PE)	230; single-phase (L/N/PE)
Frequency (Hz)	50	50	50
Power factor range	-0.8 to +0.8	-0.8 to +0.8	-0.8 to +0.8
Back-up & off-grid AC output			
Max. AC power (W)	3.6	5.0	5.0
Off-grid AC rated voltage (V)	220/230/240	220/230/240	220/230/240
AC nominal current (A)	18	20	20
Frequency (Hz)	50	50	50
Max. AC short current (A)	18	25	25
Switching time (milliseconds)	20	20	20
Peak power (off-grid)/time (%/second)	150/10	150/10	150/10
Back current (A)	0	0	0
Grid type	Single-phase (L/N/PE)	Single-phase (L/N/PE)	Single-phase (L/N/PE)

## HOME STORAGE SYSTEM SPECIFICATIONS

Battery data	S4 EU-A36	S8 EU-A50	S12 EU-A50
Battery type	Lithium (LFP)	Lithium (LFP)	Lithium (LFP)
Nominal storage capacity (kWh)	3.84	7.68	11.52
Usable storage capacity (kWh)	3.46	6.91	10.37
Battery capacity (Ah)	75	150	225
Nominal voltage (V)	51.2	51.2	51.2
Voltage range (V)	42-58	42-58	42-58
Max. charge current (A)	50	100	100
Max. discharge current (A)	50	100	100
Depth of discharge (DoD)(%)	90	90	90
Cycle life	6000	6000	6000
Regular parameters			
Dimensions (H x W x D) (mm)	1230 x 700 x 340	1335 x 750 x 565	1335 x 750 x 565
Weight (kg)	85 (not including battery)	120 (not including battery/s)	120 (not including battery/s)
Display	7" LCD touch screen	7" LCD touch screen	7" LCD touch screen
Communication	CAN-WIFI	CAN-WIFI	CAN-WIFI
Operating temperature range (° C)	-10 to +40	-10 to +40	-10 to +40
Storage stability range (° C)	-20 to +60	-20 to +60	-20 to +60
Relative humidity (%)	5 to 95	5 to 95	5 to 95
Altitude (m)	<2000	<2000	<2000
Cooling method	Forced airflow	Forced airflow	Forced airflow
Degree of protection	IP20 (+ optional external enclosure)	IP20 (+ optional external enclosure)	IP20 (+ optional external enclosure)
Warranty	10 years*	10 years*	10 years*

\* NB: 2-year warranty for LCD touch screen, 5-year warranty for circuit breakers.

### CERTIFICATIONS

AS/NZS 4777.2: 2015

IEC 62109-2: 2011

IEC 62109-1: 2010

IEC 62619: 2017

UL1973

AS/NZS 60950.1: 2015

### RECOMMENDED GENERATORS

Please check relevant manual for guide to recommended generators.

## POWER CELL SYSTEM SPECIFICATIONS\*

PV input	
Max. DC power (kW)	65
Max. DC voltage (V)	900
MPPT voltage range (V)	520-800
Max. input current (A)	100
Number of MPPT trackers	1
AC output	
AC nominal power (KW)	50
Max. AC current (A)	72
Max. AC short circuit current (A)	72
Max. AC protection current (A)	72
Nominal AC voltage/range (VAC)	400V, 3-phase (L1/L2/L3/N/PE)
Grid frequency/range (Hz)	50/60 (+-2.5 Hz)
Power factor (rated power)	-1 to +1
Displacement power factor	/
Grid type	Three-phase (3P+PE/3P+N+PE)
Off-grid AC output	
Max. AC power (kW)	50
Off-grid AC rated voltage (V)	400
AC nominal current (A)	72
Frequency (Hz)	50/60 (+-2.5)
Max. AC short circuit current (A)	/
Switching time (milliseconds)	/
Total harmonic distortion (THD)(%)	<3
Peak power (off-grid) (time)	/
Back current (A)	/
Grid type	Three-phase (3P+PE/3P+N+PE)

Battery data	
Battery type	Lithium (LFP)
Nominal storage capacity (kWh)	100
Usable storage capacity (kWh)	80
Battery capacity (Ah)	271
Nominal voltage (V)	384
Voltage range (V)	336-432
Max. charge current (A)	110
Max. discharge current (A)	110
Depth of discharge (DoD) (%)	80
Cycle life	6000
Regular parameters	
Dimensions (H x W x D)	TBA
Weight (kg)	TBA
Display	Touch screen
Communication	RS485, CAN-WiFi, ethernet
Operating temperature range (° C)	-10 to +50
Storage stability range (° C)	-20 to +60
Relative humidity (%)	5 to 95
Altitude (m)	< 3000
Cooling methods	Forced cooling
Degree of protection	IP20
Certificates	TBA
Warranty	10 years**

\* Specifications subject to change pending final approvals.

\*\* NB: 2-year warranty for LCD touch screen, 5-year warranty for circuit breakers.

A vertical composition featuring a large, bright crescent moon in the upper half against a dark, starry sky. Below the moon, a bright sun is setting on the horizon, its light reflecting on the dark, rippling surface of the ocean. The sky transitions from a deep blue at the top to a lighter, hazy blue near the horizon.

SOLUNA™ | AU





[www.soluna.com.au](http://www.soluna.com.au)

For further information,

CALL 1300 126 8888

or

EMAIL [info@soluna.com.au](mailto:info@soluna.com.au)

HEAD OFFICE Level 1 / 677 Murray Street,  
West Perth, Western Australia 6005